

Job Reference

CLIENT: Major Gas Supplier in U.A.E.



DATE: October 2009

LOCATION: Mussafah, Abu Dhabi, U.A.E.

EQUIPMENT: Gas Pipeline

PROBLEM: Buried Carbon Steel pipeline are continuously attacked by sea water causing severe corrosion to pipelines. These pipelines carry liquefied gas and integrity of the pipes need to be maintained.

SOLUTION: The surface on the Carbon Steel pipeline grit blasted, SA 2.5 Standard with a 75 microns profile. Pipeline was then cleaned with Acetone followed by the application of 1st coat of SolarSeal. After curing 2nd coat of SolarSeal was applied & wrapped with SolarTech Sheet Laminate. A final 3rd coat of SolarSeal was applied as a top seal coat.

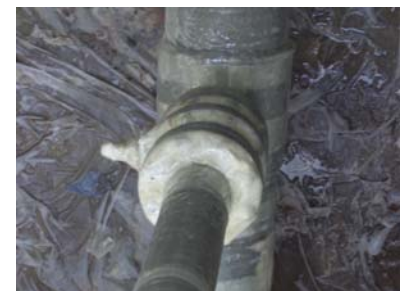
WHY SOLARTECH? Adhesion to primed steel and between SolarTech layers is excellent in resisting soil stress and sea water for corrosion and erosion problems.



Pipe after SolarTech material application



Application detail



Application detail